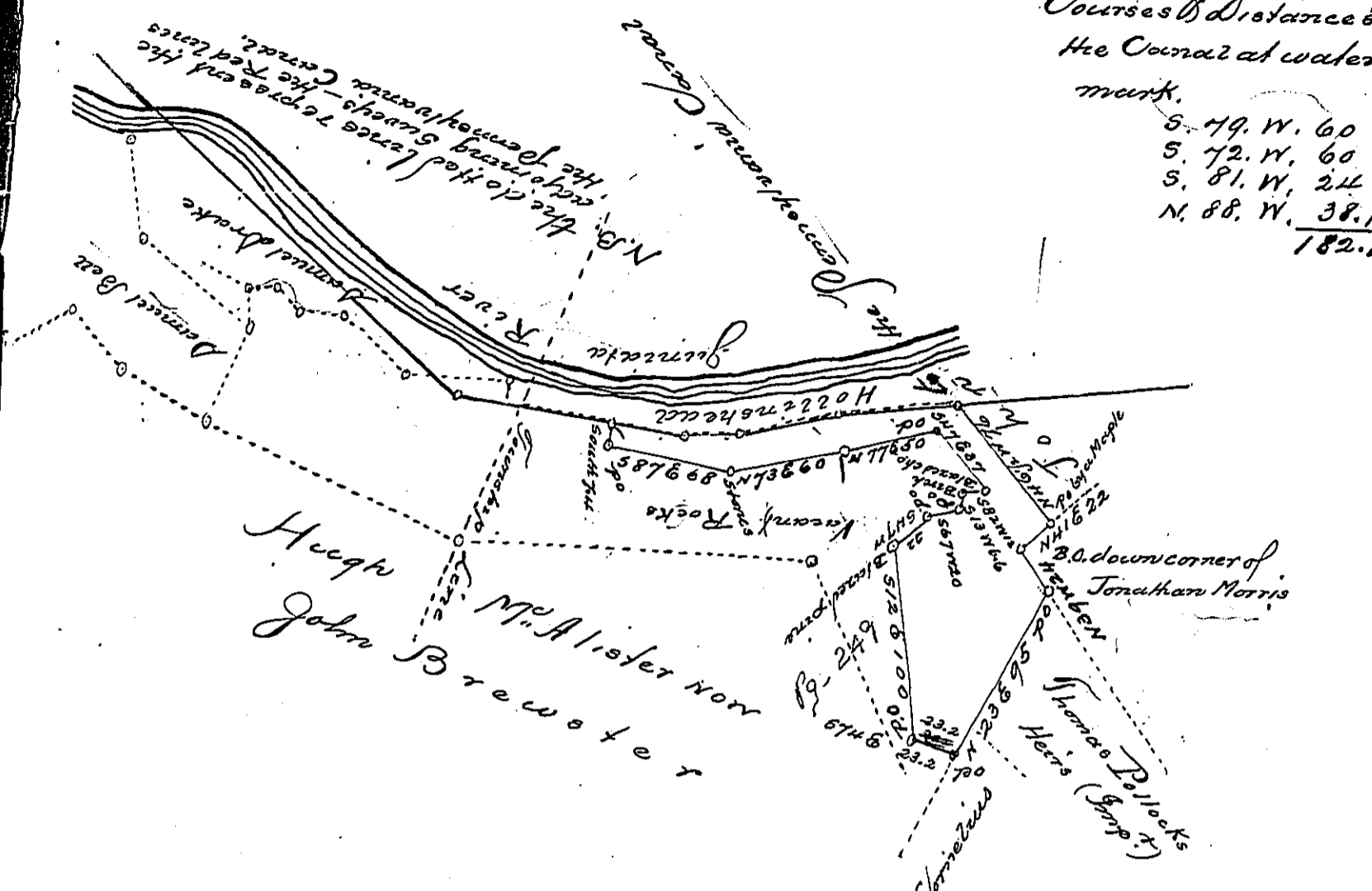


Courses & Distances 250
 The Corner at water
 mark.

S. 49. W. 60
S. 72. W. 60
S. 81. W. 24
N. 88. W. 38.1
182.1



Situate in Shirley Township Huntingdon County, containing fifty five acres and
 allowed to. Surveyed the first day of September 1847 in pursuance of
 of a warrant granted to David Caldwell the 17th day of May 1847. for
 fifty acres. Resurveyed in part on account of the first survey being too
 large and the surplus thrown out in March 1849.

John Laporte Esq. J.G. Saml Caldwell D.J.

Thomas Fister files a caveat against
 the above return of claims, the above land by virtue as he alleges by
 virtue of of his Warrant dated the 12th day of August 1848.
 for fifty acres.
 there is yet more than 100 acres of vacant land suiting the calls of
 this warrant, which ^{warrant} he refuses to have executed.

Saml Caldwell D.J.

IN TESTIMONY that the above is a copy of the original remaining on file in
 the Department of Internal Affairs of Pennsylvania, made
 conformably to an Act of Assembly approved the 16th day of
 February, 1833, I have hereunto set my Hand and caused
 the Seal of said Department to be affixed at Harrisburg,
 this sixth day of November, 1900

James W. Latta
 Secretary of Internal Affairs.